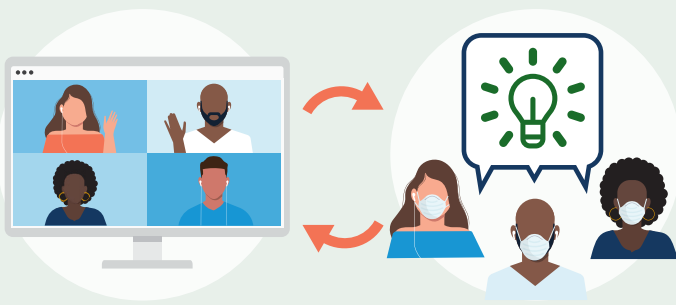




What is Physically Distanced Learning?



Physically Distanced Learning (PDL) combines online teaching and learning with selected forms of face-to-face teaching under physical distancing. PDL is driven by the health protocols imposed by the Covid-19 pandemic and will be adopted for semester 1 2021 at UCT.

[Find out more about PDL](#)

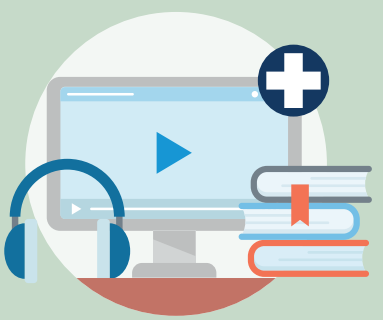
How is PDL different from Emergency Remote Teaching??



Focus on design
More time for deliberate course design and developing learning activities, building on experiences from ERT.



More flexibility
Opportunity for both online and in-person teaching (formal and informal, synchronous and asynchronous).



Better connectivity
Return to residence and provision of devices ensure connectivity and access for many students. Use of external (non-Vula) apps and platforms possible where necessary.



Limited access to campus
Access to essential teaching spaces for lectures, other learning activities and assessment possible.



Student workload & assessment
45 hours per week course load. More options for assessment. Normal grading (no Pass/Fail).

Advice for resilient course design for first semester 2021

Online by default, in-person where feasible.



Content delivery

- Pre-record lectures and avoid synchronous lectures where possible
- Provide transcripts, notes, audio or other low-tech alternative formats

Tutorials, labs and studio work

- Reserve in-person teaching for tutorials and small group interactions
- In-person tutorials may need to take place on a rotational basis depending on venue availability
- Laboratory and studio work arranged at set times to accommodate physical distancing requirements

Assessment

- Use continuous assessment methods where possible
- All academic rules operating as per normal; results shown as grades and contribute to GPA
- Invigilated exams possible

[Design your 2021 course](#)



Risks and unknowns

[View current risks](#)

Some students access campus via public transport - risk of infection is a concern

Possible travel restrictions may mean some international students cannot be in Cape Town

More tutors may be required to accommodate additional sessions under physical distancing requirements

Student digital access depends on zero-rating, day-student study spaces and lab capacity

Overall venue capacity reduced for 1.5m social distancing

